



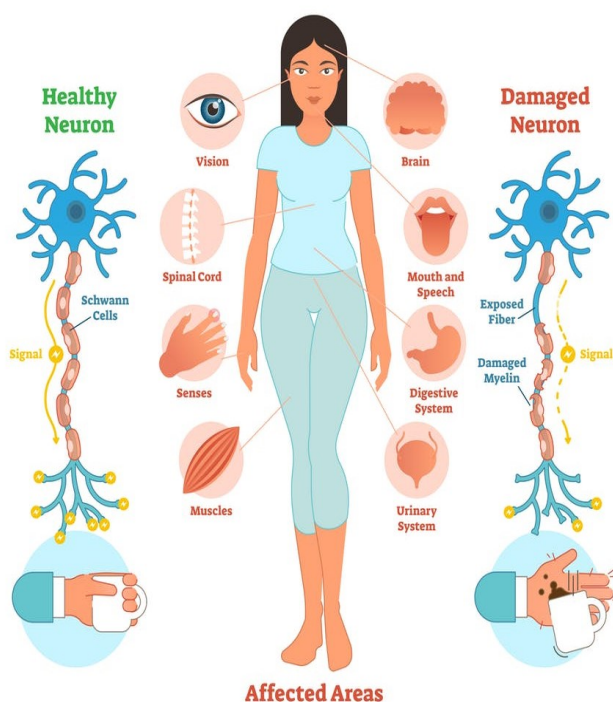
MULTIPLE SCLEROSIS
AWARENESS



Volume 3,
Issue 21
March 2020

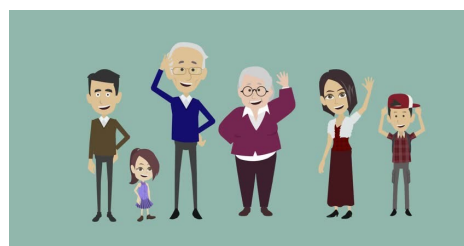
What is Multiple Sclerosis?

- Multiple Sclerosis (MS) is an autoimmune disorder that can affect the central nervous system



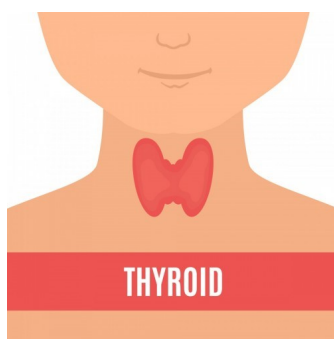
Incidence:

- MS is commonly diagnosed between ages 20-40 but can occur at any age

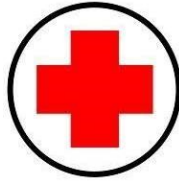


- It is estimated that there are 2.5 million cases worldwide whereas 200 cases are diagnosed each week in the United States.
- The ratio of women with MS to men with MS is 2:1.
- If you have a parent or sibling with MS there is a 1-3% chance of you developing it.

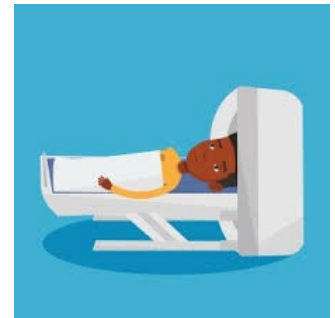
People with the following conditions have a higher chance of developing MS



Tests and Diagnosis



- Blood Tests - check for infectious or inflammatory disease with symptoms identical to MS
- Spinal tap (lumbar puncture) - rules out viral infection and other conditions with signs related to MS
- MRI - reveals areas of MS lesions on your brain and spinal cord



Treatment Options

- There is no cure as of now although there are several modes of treatments available including steroids, interferons and copolymers.



- Injection (SC)**
- **Interferons**
 - Rebif®
 - Avonex®
 - Betaseron®
 - Plegridy®
 - Extavia®
 - **Glatirmer Acetate**
 - Copaxone®
 - Glatopa



- Pills (PO)**
- **Fingolimod**
 - Gilenya®
 - **Dimethyl Fumerate**
 - Tecfidera®
 - **Teriflunomide**
 - Aubagio®



- Infusion (IV)**
- **Natalizumab**
 - Tysabri®
 - **Alemtuzumab**
 - Lemtrada®
 - **Ocrelizumab**
 - Ocrevus®